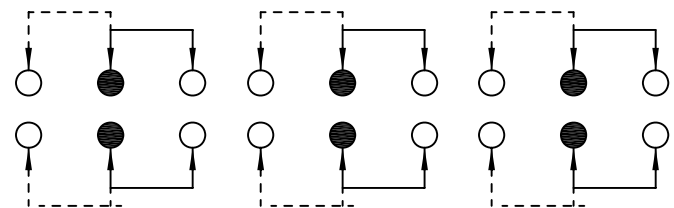
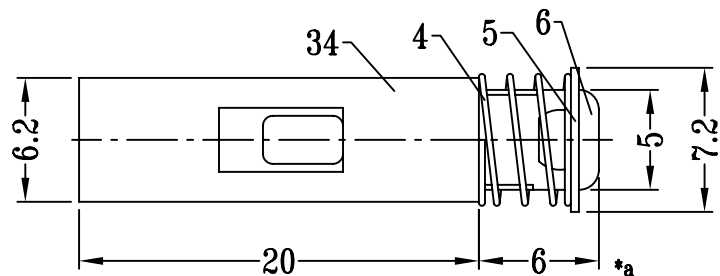
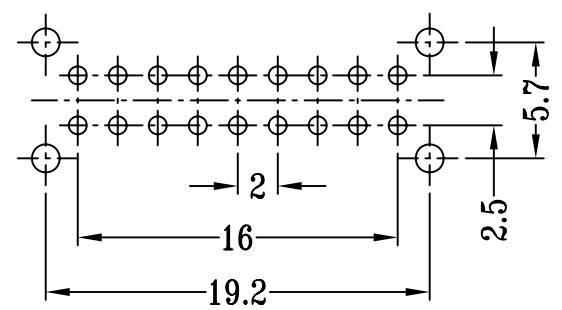
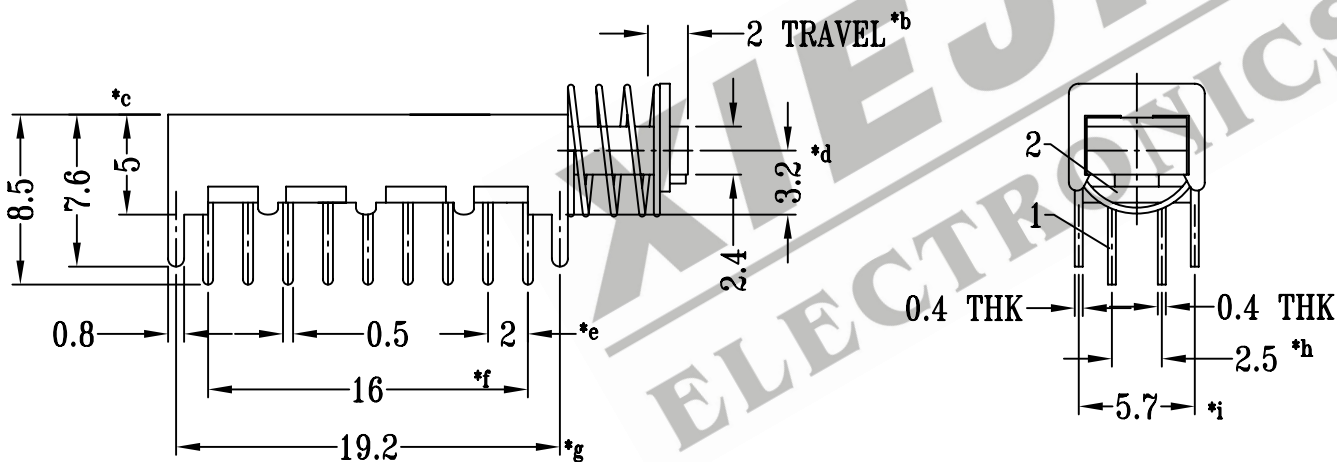


CAD FILE:



SCHEMATIC (NON-SHORTING)



P.C.B LAYOUT

注：“\*”表示关键尺寸（9个）

|     |              |                 |      |                          |                   |                                      |      |   |  |                            |
|-----|--------------|-----------------|------|--------------------------|-------------------|--------------------------------------|------|---|--|----------------------------|
| 8   |              |                 |      |                          | TOLERANCE         | SHENZHEN XIEJIA ELECTRONICS CO.,LTD. |      |   |  |                            |
| 7   | CONTACT CLIP | PBS             | 6    | Ag CLAD                  | UNLESS SPECIFIED  |                                      |      |   |  |                            |
| 6   | KNOB         | POM             | 1    | BLACK                    | WITHIN: 1.5±0.1mm | ISSUE                                | DATE | DESCRIPTIONS                            |  | APPD.                      |
| 5   | BLOCK        | STEEL STRIP     | 1    | Ni PLATED                | OVER : 1.5±0.2mm  |                                      |      | UNIT : MM                               |  | DRWG NO.: XJ-DR-PS62D14-00 |
| 4   | SPRING       | STAINLESS STEEL | 1    | Ni PLATED                |                   |                                      |      | SCALE: 5:2                              |  | DWN. ZHOUYU 2004-4-5       |
| 3   | FRAME        | STEEL STRIP     | 1    | Ni PLATED                |                   |                                      |      | TITLE : PUSH SWITCH                     |  | CHK'D FANGYING 2004-4-5    |
| 2   | BASE         | PHENOLIC RESIN  | 1    | NATURAL                  |                   |                                      |      | MODEL: PS-62D14                         |  | APPD. KANGXINAN 2004-4-5   |
| 1   | TERMINAL     | BRASS STRIP     | 18   | Ag PLATED OVER Ni PLATED |                   |                                      |      | ALL MATERIALS MUST BE COMPLIANT TO ROHS |  |                            |
| NO. | PART NAME    | MATERIAL        | Q'TY | FINISHING                |                   |                                      |      |   |  |                            |